

TEAMLINK 3002ER- E1 to Ethernet Router

1. Features:

- Teamlink Ethernet to E1 Router will convert the Ethernet into E1 Protocol Level signal for connecting to the E1 Modems.
- Can be configured in bridge Mode as well as in routing Mode
- In Bridge Mode HDLC framing will be sent over the E1 Interface with the CRC-16 for compatible with the Central MPLS Router
- In Routing Mode Static Routing with the PPP Encapsulation
- Easy Menu Driven Software For the Configuration and Status Monitoring
- ICMP Ping Request and Replay for Easy Diagnostics
- Managed Ethernet Port For the status monitoring and configuration in Telnet, SNMP
- Automatic Detection of the Clock speed
- E1 UP and Down Condition. And Serial Interface Checking.

2. LAN Interface Specification

- Complied according to the IEEE802.3
- 10Base-T and 100Base TX Support
- Mac Address Filtering
- Auto MDI-X Support

3. Clocking Supported

- Recovered From E1
- Internal Clock

4. Protocols Supports

- ARP, RARP, ICMP
- PPP, LCP, IPCP, IP
- IPv4, TCP, UDP, TFTP

E1 Interface

Number ports : 1

Bit Rate : 2.048Mbps

Line Coding : HDB3

Line Impedance : Balanced 120 Ohms

Interface Connectors : RJ45

Complies With : ITU G.703 and G.704.

TEAMLINK 3002ER- E1 to Ethernet Router

5. Diagnostics

- Serial UP or DOWN Condition checking.
- ICMP Request using the trace Route Menu.

6. Routing Protocols

- Bridging Mode
- Static Routing

7. Management

- Console
- Telnet
- SNMP

8. Firmware Download

- Through the Serial Port Using the X-Modem Protocol
- Using the TFTP over Ethernet Port.

9. LED Indications:

- PWR, E1Sync, ALM, ETH_LINK, ETH_SPD, PPP_LNK

10. Power Supply.

- 48V DC and 230V AC Dual power supply.
- Redundant Power supply is ordering time Option. Redundancy of 5V DC for the Primary Power supply so that we can Connect External 5V Power Adaptor In case of Internal Power supply Fails.

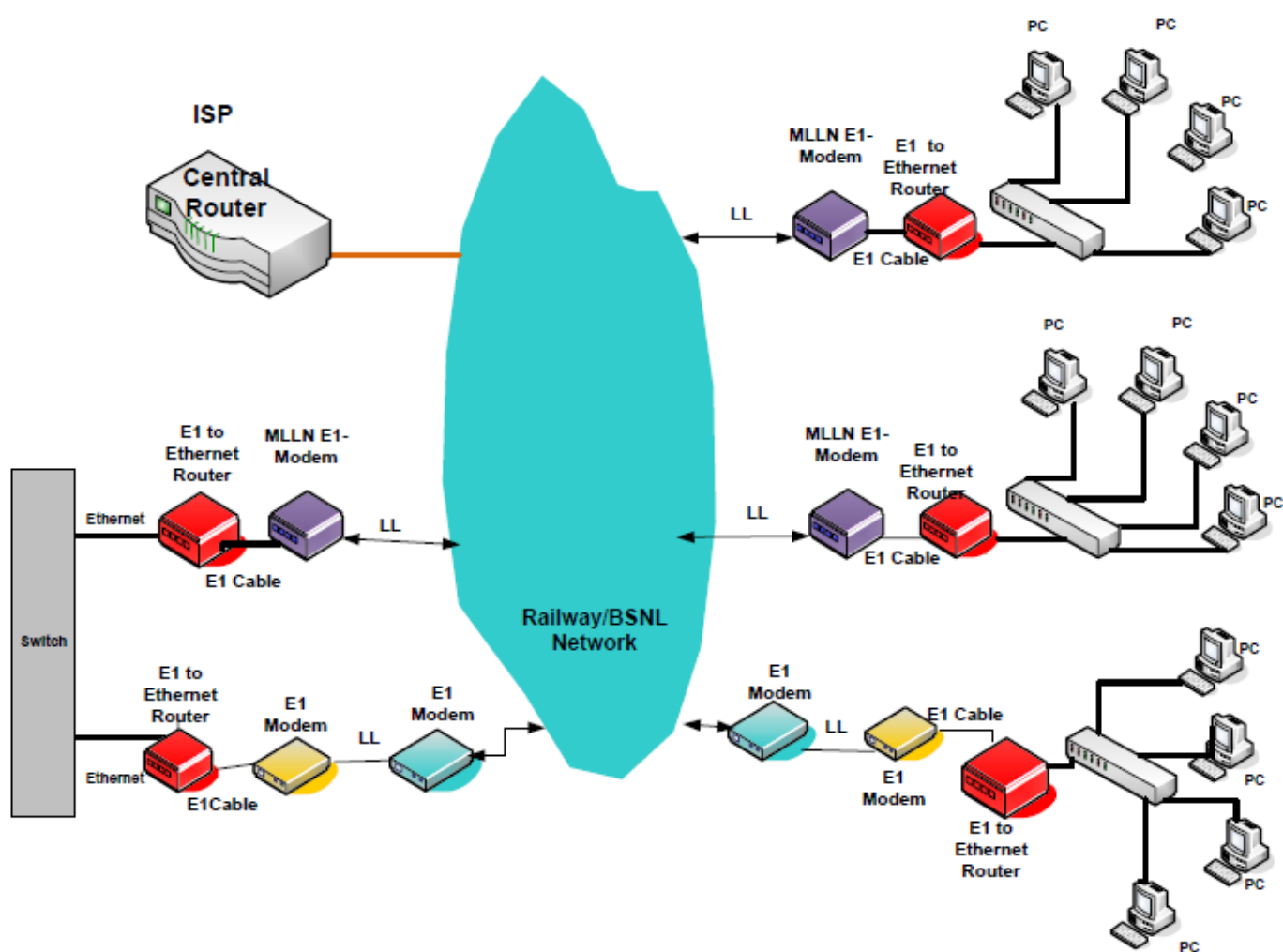
11. Environment:

- Operating Temperature: -5 to +55°C
- Operating Humidity: 5% to 99 %

12. Casing:

- Rugged Metallic Aluminum Casing as for the Field Conditions.

TEAMLINK 3002ER- E1 to Ethernet Router



Application Diagram of TEAMLINK 3002ER- E1 Router