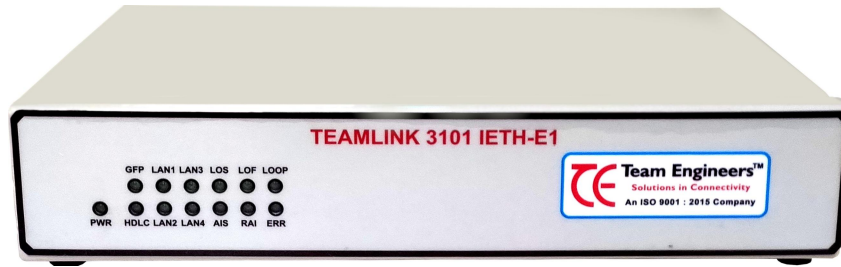


Teamlink 3101 is an Intelligent converter connecting 10/100Mbps fast Ethernet over fractional or full E1 circuits, that enable service providers and ISP's to supply transparent Ethernet services over SDH and PDH circuits



FEATURES

HDLC/ GFP - F Encapsulation.

Supports CRC- 4 multi frame auto adoption.

Loop back detection at WAN or E1 side and discards the ethernet packets to protect the ethernet network from jamming.

Complying GFP (G.8040, G7041 / Y.1303) HDLC framing compatible with the RJ-107.

Discards over sized and undersized packets

Support STP/RSTP

The Fast Ethernet bridge handles 1784 bytes frames supporting for VLAN applications and other protocols requires large frame sizes

4K Mac address table learning

Broadcast storm filtering supports

Mac table display for each Ethernet port & E1 side also

The Teamlink 3101 Ethernet to E1 converter can interoperable with third party converters with standard HDLC or GFP framing that can eliminate pair of converters for each link.

GFP framing that can eliminate pair of converters for each link

Auto MDIX for auto TX/RX

4 levels of QoS based on four priority queues

VLAN tagging and Untagging

Ethernet Transmit, Receive, Collision and error packets display

**In- band & out of band
Management access via**

ASCI Terminal
Telnet
SNMP
Teamview - EMS

MANAGEMENT

- SNMP based element management software provides SNMP traps, status polling and configuration download.
- Remote configuration is also possible through TELNET & SNMP using In-band Management
- The devices are managed In-band from the Fast Ethernet user port or via the TDM port.
- Ethernet traffic is transported together on same Ethernet flow, separated by different VLANs, thus ensuring traffic security.

DISGNOSTICS

- Remote and local loopbacks are used for problem isolation at the physical layer
- A built-in pin utility checks IP connectivity by pinging remote IP hosts.

SENDS ALARM NOTIFICATION To MANAGER IP ADDRESSES FOR THE FOLLOWING

- E1 : UP/DOWN
- Ethernet: UP/DOWN
- Loopback : ON/OFF
- When Ethernet error packets or collusion packets are reached more than threshold values

SPECIFICATIONS

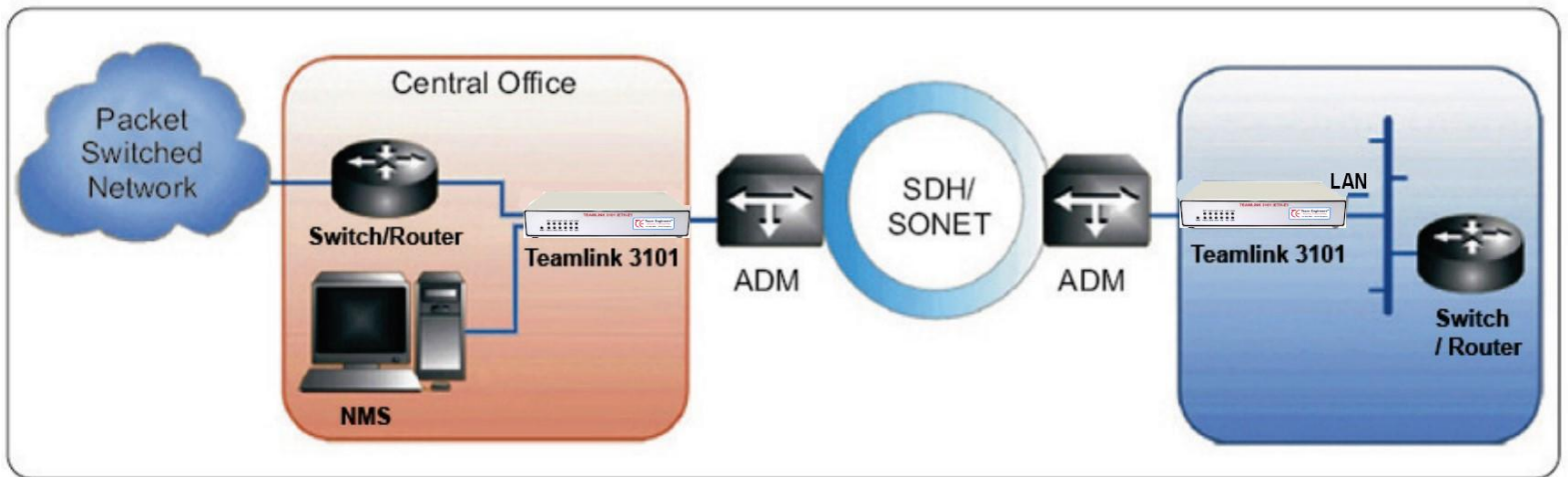
E1 INTERFACE	<ul style="list-style-type: none"> No. of ports : 1 Compliance : G.703 Data rate : 2.048 Mbps Line code : HDB3, AMI Framing : Unframed Max frame size : 1800 bytes Line Impedance : 120 ohms, balanced System Clock : Internal or Loopback timing Diagnostics : Remote & Local loopback Connector : RJ45
ETHERNET INTERFACE	<ul style="list-style-type: none"> Number of Ethernet Interfaces : 1/2/4 (Ordering time option) Type : 10/100 Mbps auto negotiation Full / Half duplex, Flow Control Auto MDIX or Auto Cross Over Facility Compliance : Confirms to the relevant sections of IEEE 802.3 & 802.3u Connector : RJ45 PoE : Power over Ethernet is an ordering time option
FRAMING	<ul style="list-style-type: none"> HDLC Compatible with RAD HDLC protocol GFP-F (G.8040, G7041 / Y.1303)
GENERAL INDICATORS	<ul style="list-style-type: none"> PWR - Power Status E1 Loss - E1 Loss Status AIS - AIS Status LOF - Loss of Frame ERR - Pattern Errors Loop - Loop Indication RAI - Remote Alarm Notification
POWER SUPPLY	<ul style="list-style-type: none"> AC : 100 to 240 VAC (± 10%), 50Hz to 60 Hz DC : -24/-48 VDC (± 10%)
POWER CONSUMPTION	<2W
ENVIRONMENT	<ul style="list-style-type: none"> TEMPERATURE : 0-70 C / 32-122 HUMIDITY : UPTO 90% Non-Condensing

ORDERING

Teamlink 3101 ETH Managed Fast Ethernet over E1 converter

AC/DC power card or Adaptor plug

APPLICATION DIAGRAM 1/2



APPLICATION DIAGRAM 2/2

